

new range

900 SERIES

Emission testing instruments



The new **900 series** offers a complete range of emission testing instruments for diesel and petrol engines.

The new **GAS930** exhaust gas analyser guarantees accuracy and reliability whether used in a PTI control station or in a modern workshop.

The **OPA940** opacimeter offers great accuracy even under the harshest conditions of use.

Ergonomics and modular solutions allow an easy measurement process thanks to the practical **GASLOOK** display terminal, complete with **printer** for use in **standalone** mode, or using the comprehensive **QTS** software for centralising all measurement results.

The range is completed with two different rev **counters** for easy measurement of engine speed for motor vehicles and motorbikes.

The practical **GASMOVE** carriage allows easy movement in all situations.



Accuracy



Ergonomics



Modular solutions



QTS software



MCTC Net 2



TECNOMOTOR



CAR



BUS



TRUCK



MOTO



VAN

made in italy



GAS930

Exhaust GAS analyser

Metrological technical features

- **Weight:** 6 kg
- **Dimensions:** 460 x 260 x 250 mm
- **Power supply:**
100 ÷ 240 VAC, 50÷60 Hz Battery Pack / 60W
- **Operating temperature:** +5° ÷ +40 °C
- **Storage temperature:** -20 ÷ +60 °C
- **Pressure:** 850 hPa ÷ 1060 hPa
- **Humidity:** 0% RH ÷ 85 % RH
- **Maximum heating time:** 100 sec.
- **Reset:** Electronic and automatic
- **Oil Temp.:** 0 ÷ 200°C Res.1°C



QTS software
(included)

- **CO measure:** 0 ÷ 10% Vol Res.0.01% Vol
- **CO2 measure:** 0 ÷ 20% Vol Res.0.1% Vol
- **HC measure:** 0 ÷ 10000ppm Vol / Res. 1
- **O2 measure:**
0 ÷ 22% Vol / Res.0.01% (O2C 10%) 0.1 (O2 >10%)
- **LAMBDA factor:** 0 ÷ 5 Res.0.001
- **NOx measure:** 0 ÷ 5000ppm Vol Res.1
- **Rpm:** 0 ÷ 9999 rpm / Res.10
- **Response time:** ≤ 15 sec. (with 6m probe)
- **Condensate drainage:** continuous and automatic
- **Gas suction:** 3.2 l / min (minimum)

Functional technical features

- **Communication ports:** RS232, Bluetooth
- **Display mode:** **GASLOOK** handheld terminal, **QTS** PC operating software
- **Metrological approvals:** OIML R99/2008 Class 0
MID 2014 / 32 / EU
MCTC, MCTC Net2 (with **QTS SW**) NETWORK / DIR mode
- **Print report:** Summarised report through **GASLOOK** terminal
Extended Report via **QTS** Software

OPTIONAL ACCESSORIES

GAS930

Exhaust GAS analyser



GASBIKE

Sampling kit for 2T
motorbikes - Italy



GASMOVE

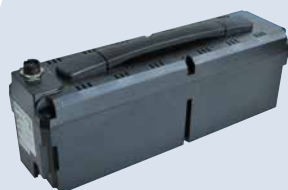
Single-seat carriage

GASLOOK



Handheld terminal

OIML R99/2008 Class 0
MID 2014 / 32 / EU
MCTC, MCTC Net2
(with QTS SW)
NETWORK / DIR mode



Battery pack



NOX sensor



Support for GASMOVE for
single-seat carriage



Motorbike sampling kit
(GENERAL PURPOSE)



Oil temperature probe



OPA940

Opacimeter

 **MCTC Net2**



Software QTS
(included)

Metrological technical features

- **Weight:** 6 kg
- **Dimensions:** 460 x 200 x 250 mm
- **Power supply:** 100 ÷ 240 VAC, 50÷60 Hz
Battery Pack / 70W
- **Operating temperature:** +5° ÷ +40 °C
- **Storage temperature:** -20 ÷ +60 °C
- **Pressure:** 85 ÷ 102.5 kPa
- **Humidity:** 0% RH ÷ 95 % RH
- **Maximum heating time:** 5min (5°C).
- **Reset:** Automatic with solenoid valve
- **Oil Temp.:** 0 ÷ 200°C Res.1°C
- **Rpm:** 0 ÷ 9999 rpm / Res.1
- **Absorption coefficient K (m-1):**
0 ÷ 9.99 m-1 Res 0.01
- **Absorption percentage N (%):** 0 ÷ 99.9 % Res 0.1%
- **Acceleration time:** 0.05 sec
- **Fume temperature:** 0 ÷ 300 °C. Res1
- **Effective chamber length:** 200 mm
- **Chamber temperature:** 75 °C
- **Light source:** Green LED
- **Metrological compliance:** ISO 11614
- **Chamber pressure:** 750 ÷ 1100 hPa

Functional technical features

- **Communication ports:** RS232, Bluetooth
- **Display mode:** **GASLOOK** handheld terminal, **QTS** PC operating software
- **Metrological approvals:** Compliant with ISO 11614, 72/306 EC
MCTC, MCTC Net2 (with **QTS SW**), NETWORK / DIR mode
- **Print report:** Summarised report through **GASLOOK** terminal
Extended Report via **QTS** Software

OPTIONAL ACCESSORIES

OPA940

Opacimeter

GASMOVE

Single-seat carriage

GASLOOK



Handheld terminal

ISO 11614, 72/306 EC
MCTC, MCTC Net2
(with QTS SW)
NETWORK / DIR mode



Support for GASMOVE
for single-seat carriage



Battery pack



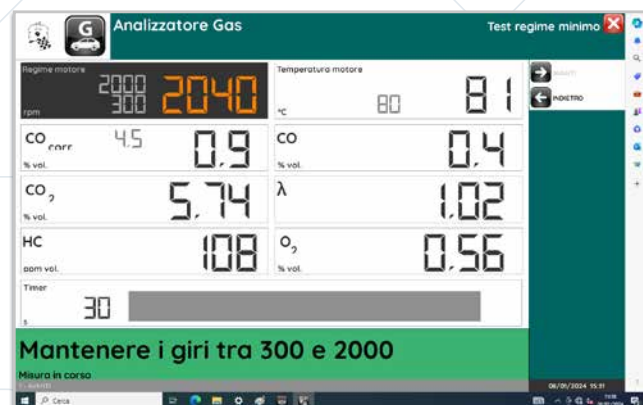
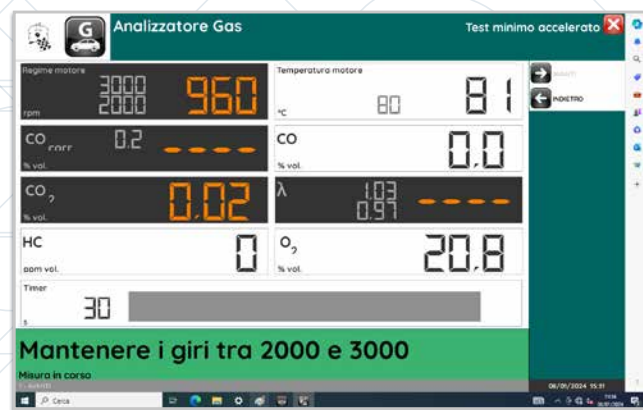
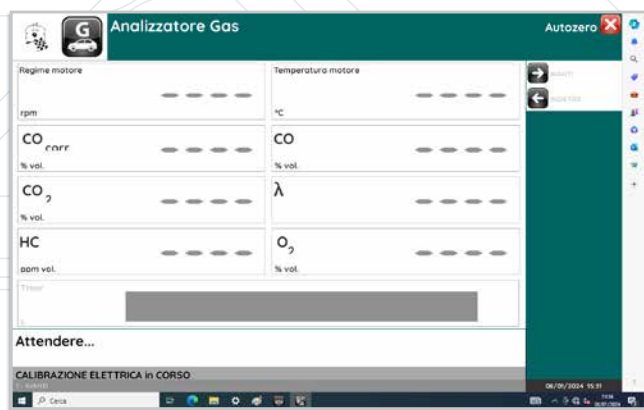
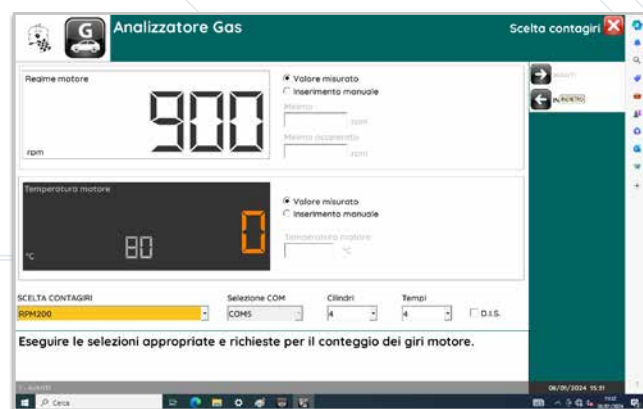
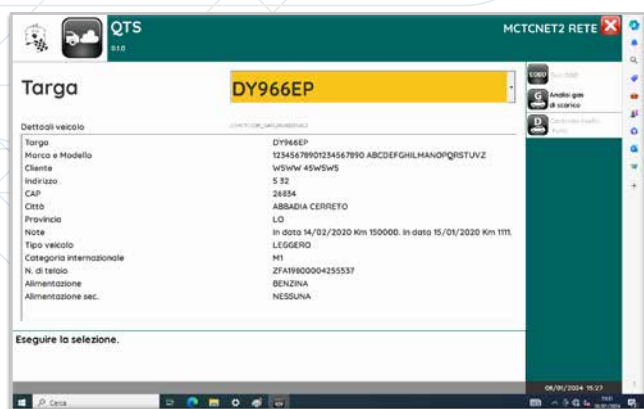
Oil temperature probe



QTS software

In addition to the intended use configurations, the QTS software **allows the display of measured values** of both exhaust gas analyser and opacimeter, depending on the specific test procedure.

Everything **is displayed quickly and easily** for great test flexibility.



REV COUNTER

RPM200

Rev counter for LCVs and HCVs

- **Connection:** Bluetooth 1.2
- **Power supply:** 8 ÷ 32 Volts
- **Ripple measurement:** 12 ÷ 24V
- **Range:** 100 ÷ 9999 Rpm
- **Temperature:** 0 ÷ 199 °C
- **Weight:** 0.8 kg
- **Dimensions:** 155 x 162 x 63 mm



Measurement from EOBD port:
ISO 9141-2, ISO 142230, SAEJ1850PWM,
SAEJ 1850 VPW, CAN ISO 11898

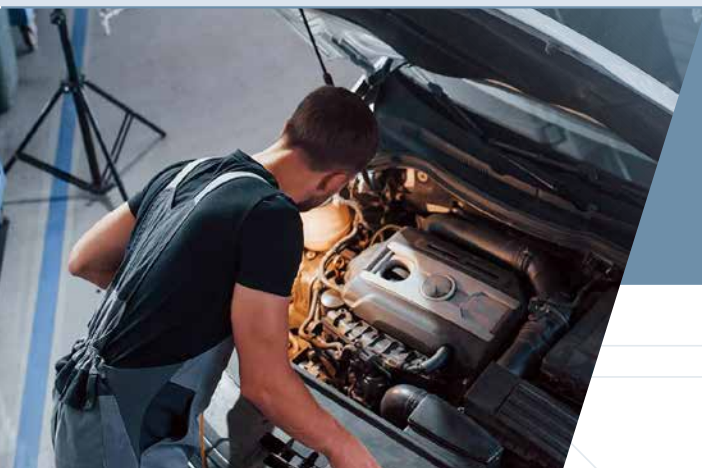


RPM210

Motorbike rev counter
with support stand

- **Display:** Backlit 64x128 LCD
- **Power supply:** Lithium battery
- **Measuring principle:** Radiofrequency
- **Range:** 100 ÷ 9999 Rpm
- **Temperature:** 0 ÷ 199 °C
- **Dimensions:** 204 x 110 x 117 mm
- **Weight:** 0.29 kg





new range

900 SERIES

Emission testing instruments



WWW.TECNOMOTOR.IT

NEXION SPA - ITALY